

# Flow Cytometry Sample Processing Packages

Flow cytometric measurement of protein phosphorylation is a critical pathway for understanding a drug's mechanism of action. Correlating this data with other key parameters such as pharmacokinetics (PK), pharmacodynamics (PD), and immunogenicity provides deeper insights into the drug's effectiveness on living cells.

However, the instability of living cell functions outside the body complicates logistical arrangements and increases the cost of performing such analyses.

## Resolian's Solution

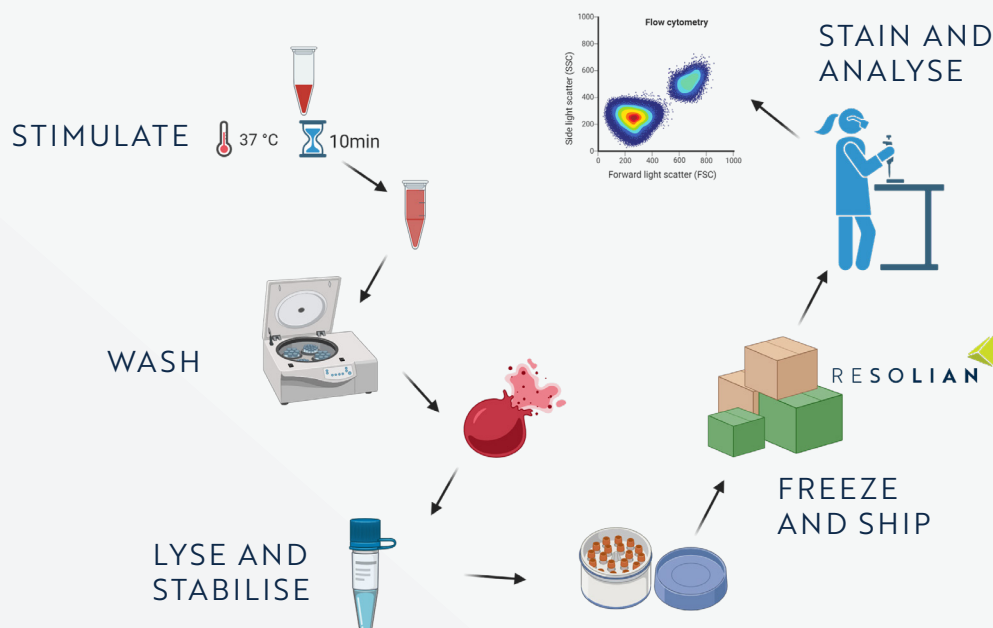
Our Flow Cytometry team have designed a sample processing package that solves this problem.

The process involves

- » Stabilising sample before shipping
- » Batch samples from one subject
- » Decrease variability

## How it works

After providing you with comprehensive training, we give you everything you need in the sample collection kit.



## Once the sample arrives at Resolian

Our experienced team deliver seamless sample handling and management



### 15mins.

When the sample arrives on site it will arrive in the lab within 15 minutes.



### Adaptable

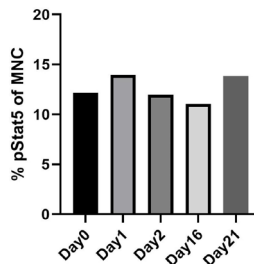
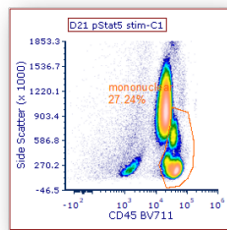
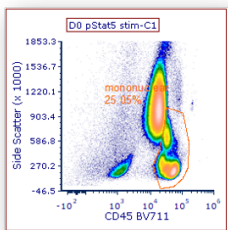
Our flexible team is available to facilitate after hours and weekend sample receipt and processing.



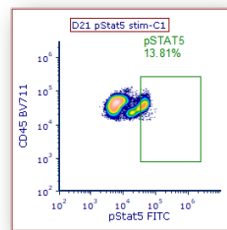
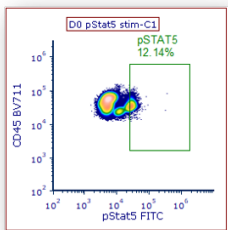
### Communication

We have built strong relationships with couriers and central lab to ensure this process works efficiently.

## Sample Processing Package - Results



- » D0, D1, D2, D15, D21 Stability
- » FSC/SSC profile remains stable
- » Simple procedure for clinic



FRESH LYSED

STABILIZED

### Why

All samples from subject analysed together-decrease variability:

- » Same antibody master mix
- » Same instrument (no day to day variation)
- » Same analyst

## Sample Collection and PBMC Preparation Kits

### Sample Collection Kits:

- » Any anticoagulant
- » Collection tubes
- » Needles
- » Swabs etc



### Labels:

- » Barcoded
- » Rated for Liquid Nitrogen
- » Can be customized
- » Quick login



### Reagents and plasticware:

- » Prefilled tubes with reagent
- » Processing tubes
- » Pasteur Pipettes
- » Xeno FREE



### Instructions

- » Lab Manual



### Processing

- » On site processing by our analyst or
- » Full hands on and remote training resources



### Quality assessment of isolated PBMCs

- » Functional assays



### Logistics

- » We help arrange prompt transportation

